



Explore with the Experts



**MURRAY RIVER SAFARI** is an expedition cruise style journey along a 70km stretch of the Murray River within the internationally significant Riverland Ramsar Wetlands.

**Over four days** you'll discover the stories of this river, stunning scenery, iconic wildlife, diverse birdlife and relax in the comfort of an eco-luxe houseboat in one of the most pristine stretches of Australia's longest river.

**Each morning** your expert guides will take you on excursions beyond the banks of the river channel to explore the forests, backwaters, floodplains, and ephemeral lakes of this living landscape.

**Each afternoon** you'll cruise further upstream unveiling a new stretch of river country to explore.

**Each evening** you'll dine on a menu celebrating the best local produce featuring native flavours with paired wines.







## THE JOURNEY AT A GLANCE

- *Duration is 4 days/3 nights*
- *Tours start and finish in Renmark South Australia*
- *Start & finish time: 1pm of Day 1 & 2pm of Day 4*
- *Accommodation is on the eco-luxe houseboat “High River” with ensuite cabins*
- *5 guest cabins keeps our group small (max 10 guests)*
- *All food and beverages are included- can cater to all dietaries*
- *Safaris depart weekly in March, April, October and November*
- *Additional tour dates available to exclusive group bookings*
- *Aside from river cruising, excursions include short walks, easy kayaking, scenic drive around the outback lakes and birdwatching.*
- *All activities are rated easy but can be opted out of or tailored*
- *Great photography opportunities of landscapes, wildlife and dark skies*

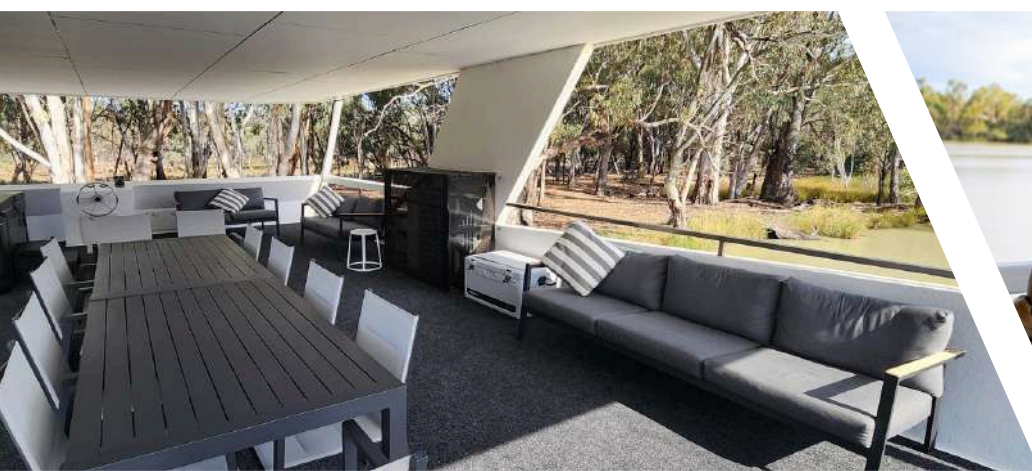
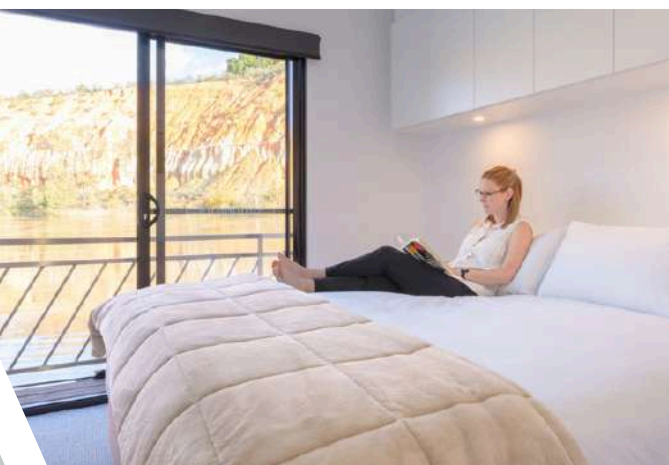
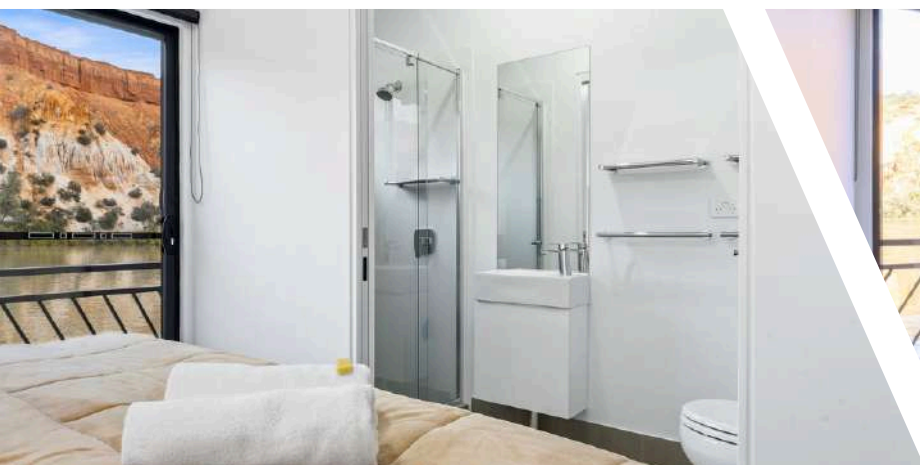






## ECO-LUXE HOUSEBOAT ACCOMMODATION

- *All cabins have- spacious ensuite bathrooms- standard power points/outlets*
- *Beds can be configured as a King Double or Twin King Singles*
- *Large interior communal lounge and dining with sweeping river views*
- *Large undercover top deck -outdoor lounge -dining -hot tub -stargazing deck*
- *Swim deck off the stern and bank access off the bow*
- *“River Library” including field guides, historical journals and relevant publications*
- *Frame TV for use in presentations*







## **WILDLIFE ON SAFARI**

*The landscapes we explore on support an impressive diversity of wildlife. It's common to see 60 to 100 of the region's 180 bird species over the four days, including migratory visitors and the vulnerable Regent Parrot. We often see the iconic Red Kangaroos bounding on the plains, emus swimming across the river and lace monitors sunning themselves on a tree.*

*Wildlife encounters create some beautiful moments, but the real magic lies in the insight that comes with them, learning how this ecosystem works, why it matters, and how floodplains and wetlands support life on the Murray.*

*For international travellers, rest assured there are no crocs in the Murray River, hanging your feet off the swim deck after a day exploring with a glass of bubbles in hand is encouraged.*







## MEETING POINT

*Meet your guides at 1pm at the Hotel Renmark Nanya Function Room- Luggage will be transferred direct to the houseboat and you will board our 12 seater pontoon cruiser for a 1.5hr cruise upstream to our first stop.*

## GETTING HERE

**Self Drive-** Free parking is available at the Hotel Renmark-

Renmark is a 3hr drive from Adelaide or a 1.5hr drive from Mildura Airport

**Bus-** Stateliner Coach Services run a Riverland Route from Adelaide to Renmark

**Transfers-** available on request, indicative pricing each way is \$550per couple ex.Adelaide or \$250per couple ex.Mildura

**Charter flights-** available on request, land at the Renmark Airfield

